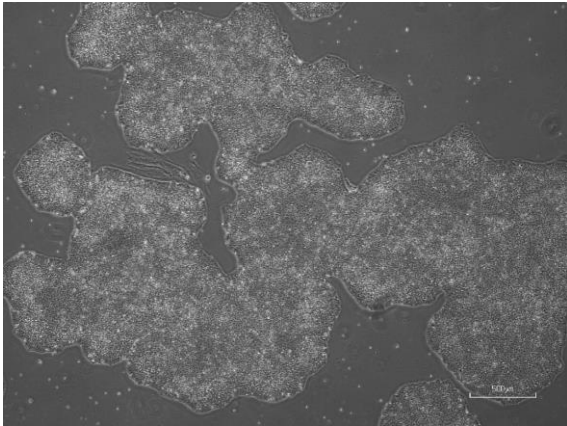
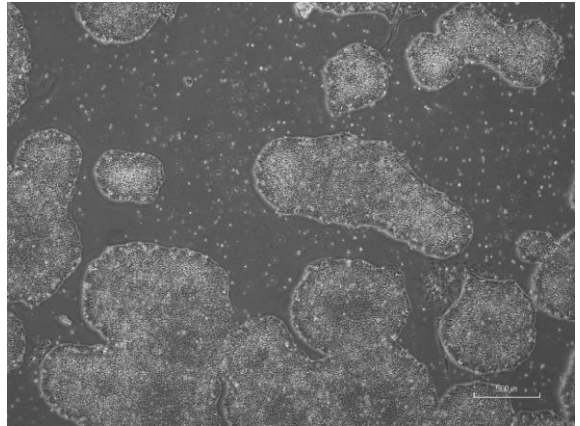


【 CiRA-jk-0055 】 Morphology of iPSC colonies

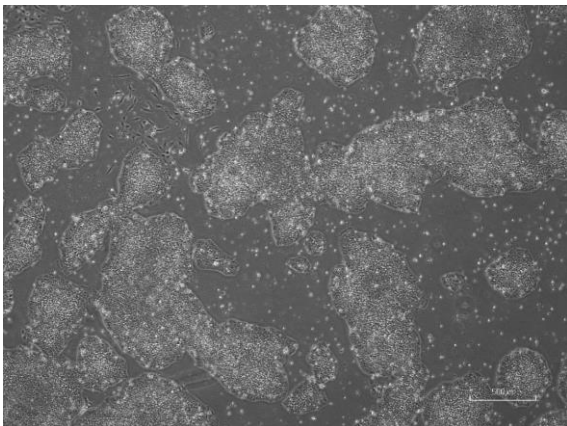
CiRA -jk-0055-A: passage-2



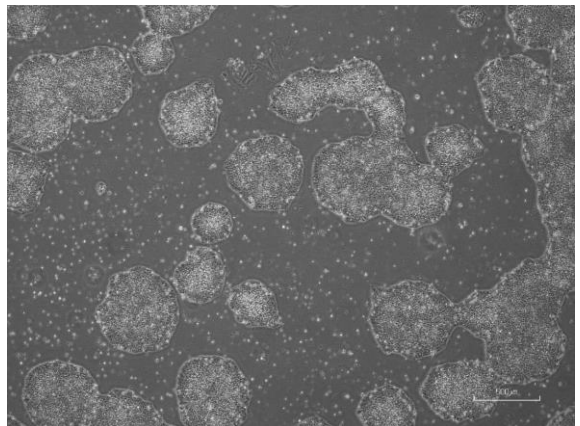
CiRA -jk-0055-B: passage-2



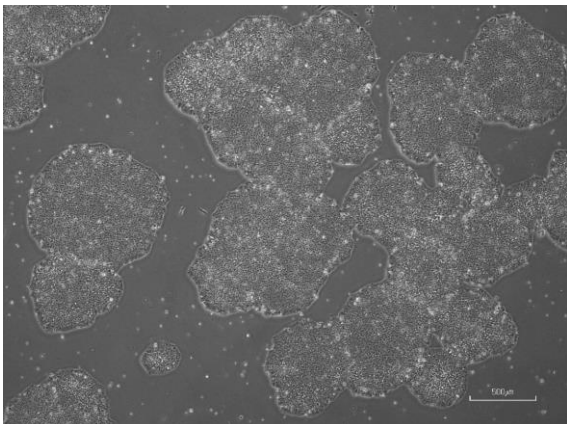
CiRA -jk-0055-C: passage-2



CiRA -jk-0055-D: passage-2



CiRA -jk-0055-E: passage-2



(All images were captured at 4x magnification)